

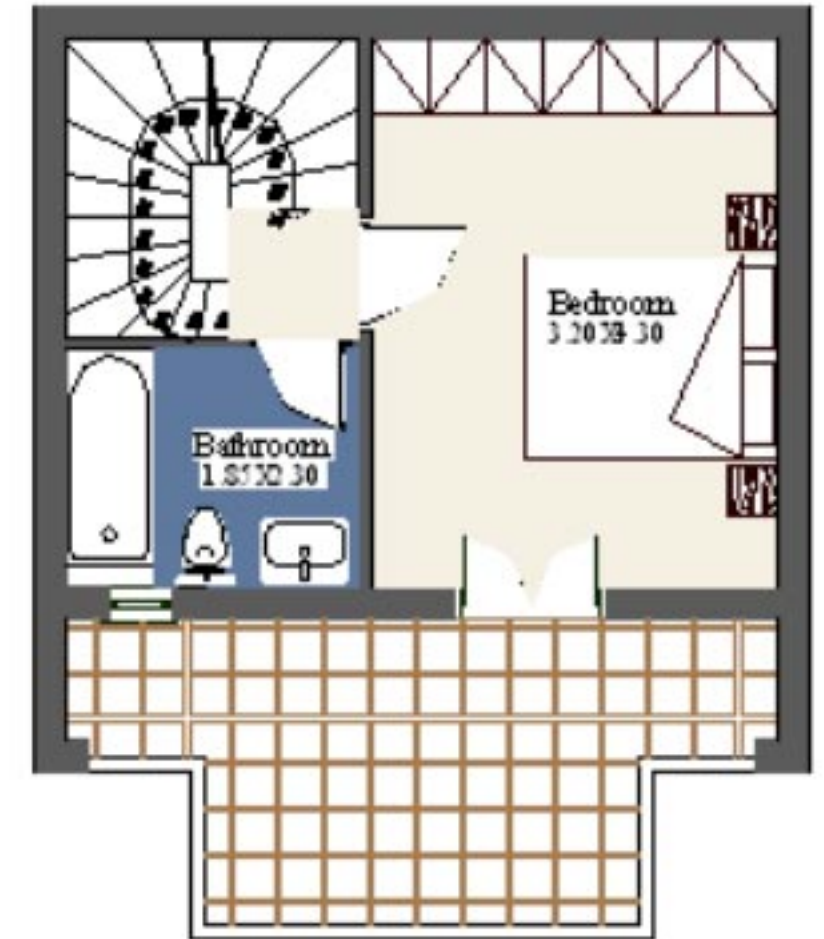
PROPERTY B



BASEMENT



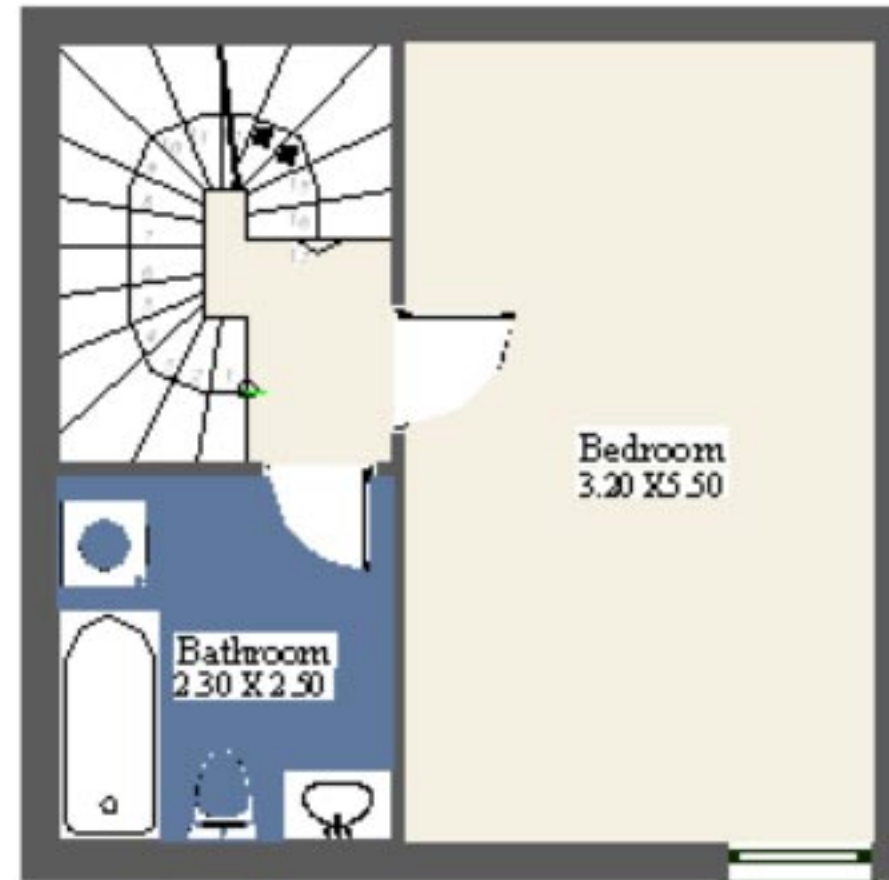
GROUND FLOOR



FIRST FLOOR

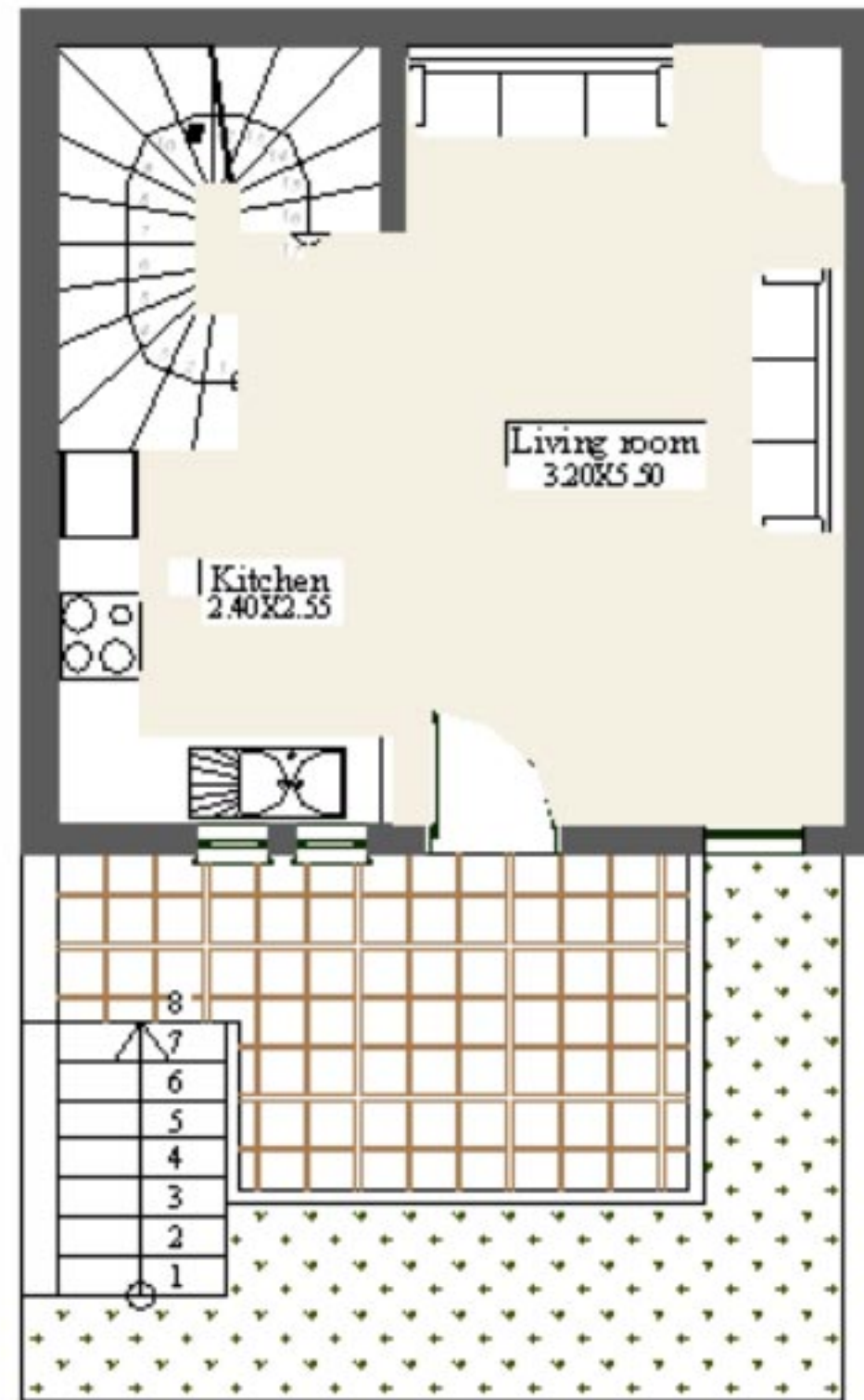
PROPERTY B									
	K 2	K 3	K 4		K 2	K 3	K 4		all
Basement	sq.M. 35.10	sq.M. 35.70	sq.M. 35.82	Terrace	sq.M. 12.02	sq.M. 12.80	sq.M. 12.01	Parking	yes
Ground Floor	sq.M. 35.10	sq.M. 35.70	sq.M. 35.82	Patio	sq.M. 16.12	sq.M. 10.25	sq.M. 12.59	Heating	yes
First Floor	sq.M. 28.08	sq.M. 28.15	sq.M. 28.66	Garden	sq.M. 21.45	sq.M. 9.72	sq.M. 83.70	Air Condition	yes
TOTAL	sq.M. 98.28	sq.M. 99.55	sq.M. 100.30						

MAISONNETTES TYPE B



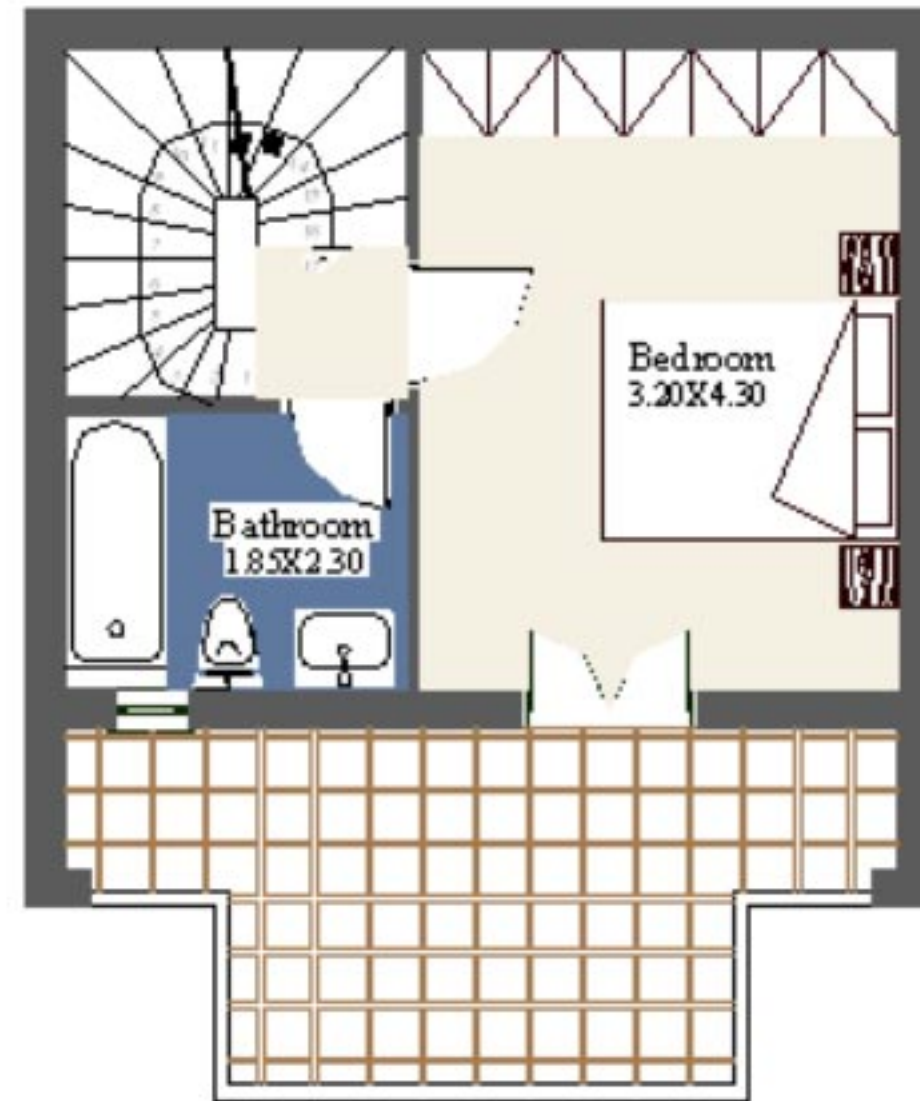
BASEMENT sq.M. 35.10

MAISONNETTES TYPE B



GROUND FLOOR sq.M. 35.10

MAISONNETTES TYPE B



FIRST FLOOR sq.M. 28.08